

Exploring the Chicago River

Ethics, Sustainability, and a Sense of Place



Mike Bryson

Sustainability Studies Program at RU

AESS Conference | Santa Clara, CA

23 June 2012



Cultivating a Sense of Place

Context

Urban Nature in Chicago

Science

Exploring the Chicago River (and beyond)

Art

Representing the river

Sustainability and Ethics

Thinking like a watershed





ROOSEVELT UNIVERSITY
EVELYN T. STONE COLLEGE
OF PROFESSIONAL STUDIES

Chicago's Urban Nature



Chicago in 1857



ROOSEVELT UNIVERSITY
EVELYN T. STONE COLLEGE
OF PROFESSIONAL STUDIES

Chicago's Urban Nature



Jardine Water Filtration Plant on Chicago's downtown lakefront



ROOSEVELT UNIVERSITY
EVELYN T. STONE COLLEGE
OF PROFESSIONAL STUDIES

Chicago's Urban Nature



North Branch of the Chicago River (Spring 2010)



ROOSEVELT UNIVERSITY
EVELYN T. STONE COLLEGE
OF PROFESSIONAL STUDIES

Chicago's Urban Nature



WMRD's Racine Avenue Pumping Station, Bubbly Creek, Chicago (May 2009)

Chicago's Urban Nature

Chicago Area Waterway System:
rivers, canals, locks, and
controlling structures



Exploring the Chicago River



Science, Nature, and a Sense of Place

Understanding the river as a modified natural ecosystem (natural sciences)

Developing policies regarding water quality, river use, sewage treatment
(social and natural sciences)

Representing the river as a cultural resource (arts and humanities)

Restoring the river: water quality, biodiversity, riparian zone vegetation,
citizen access and recreation (all disciplines)

Cultivating a Sense of Place

Context

Urban Nature in Chicago

Science

Exploring the Chicago River

Art

Representations of the river

Sustainability and Ethics

Thinking like a watershed





ROOSEVELT UNIVERSITY
EVELYN T. STONE COLLEGE
OF PROFESSIONAL STUDIES

Canoeing the South Branch



Canoe trip down Bubbly Creek, an industrialized tributary of the South Branch of the Chicago River (May 2009)



ROOSEVELT UNIVERSITY
EVELYN T. STONE COLLEGE
OF PROFESSIONAL STUDIES

Canoeing the North Branch



Heading south into the Loop where the branches meet;
Wolf Point in the background (October 2011)

Assessing Water Quality

Temperature

pH

Turbidity

Dissolved oxygen (DO)

Nutrients (nitrate / phosphate)

Bacterial indicators (coliform)

Metals and organic contaminants (lead, copper, benzene, PCBs, hexavalent chromium)

Emerging contaminants (pharmaceuticals, synthetic hormones, flame retardants)



Combined Sewage Outfall
Confluence of the
North and South Branches
(October 2011)



Sampling macro-invertebrate benthos in the
Chicago River's North Branch (May 2010)



Identifying macro-invertebrates from the
Chicago River's North Branch (May 2010)

Cultivating a Sense of Place

Context

Urban Nature in Chicago

Science

Exploring the Chicago River

Art

Representations of the river

Sustainability and Ethics

Thinking like a watershed



Photo by Ryan Hodgson-Rigsbee



ROOSEVELT UNIVERSITY
EVELYN T. STONE COLLEGE
OF PROFESSIONAL STUDIES

Ryan Hodgson-Rigsbee





ROOSEVELT UNIVERSITY
EVELYN T. STONE COLLEGE
OF PROFESSIONAL STUDIES

Ryan Hodgson-Rigsbee





ROOSEVELT UNIVERSITY
EVELYN T. STONE COLLEGE
OF PROFESSIONAL STUDIES

Ryan Hodgson-Rigsbee





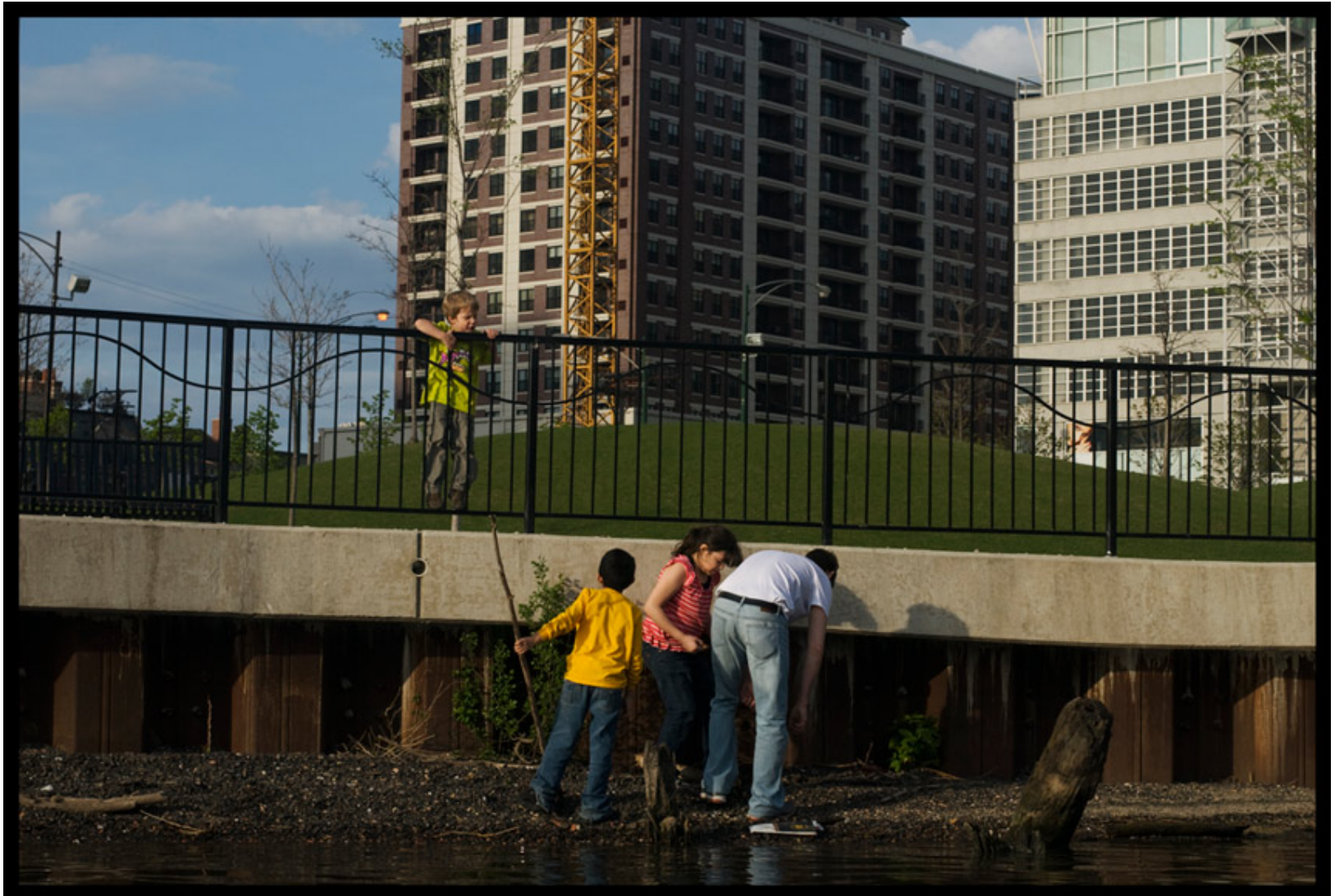
ROOSEVELT UNIVERSITY
EVELYN T. STONE COLLEGE
OF PROFESSIONAL STUDIES

Ryan Hodgson-Rigsbee



Ryan Hodgson-Rigsbee





Sustainability and Ethics

Context

Urban Nature in Chicago

Science

Exploring the Chicago River

Art

Representations of the river

Sustainability and Ethics

Thinking like a watershed



In a Sustainable Future:



Debris floating in Bubbly Creek, a tributary of the South Branch of the Chicago River

Environmental resources are conserved for both future human generations as well as non-human biota.

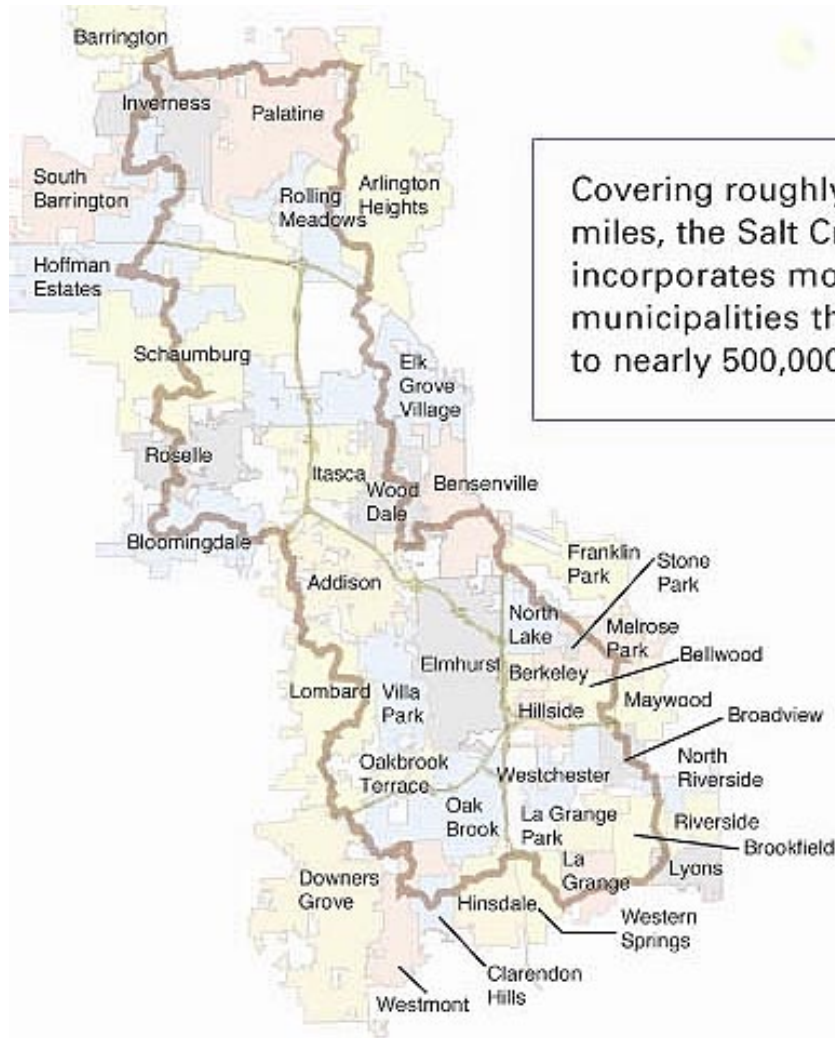
Economic development occurs not at the expense of the natural environment, but in a way to mitigate ecological costs and impacts.

Equity – social, economic, and environmental justice – governs the process of sustainable development.



ROOSEVELT UNIVERSITY
EVELYN T. STONE COLLEGE
OF PROFESSIONAL STUDIES

Salt Creek Watershed



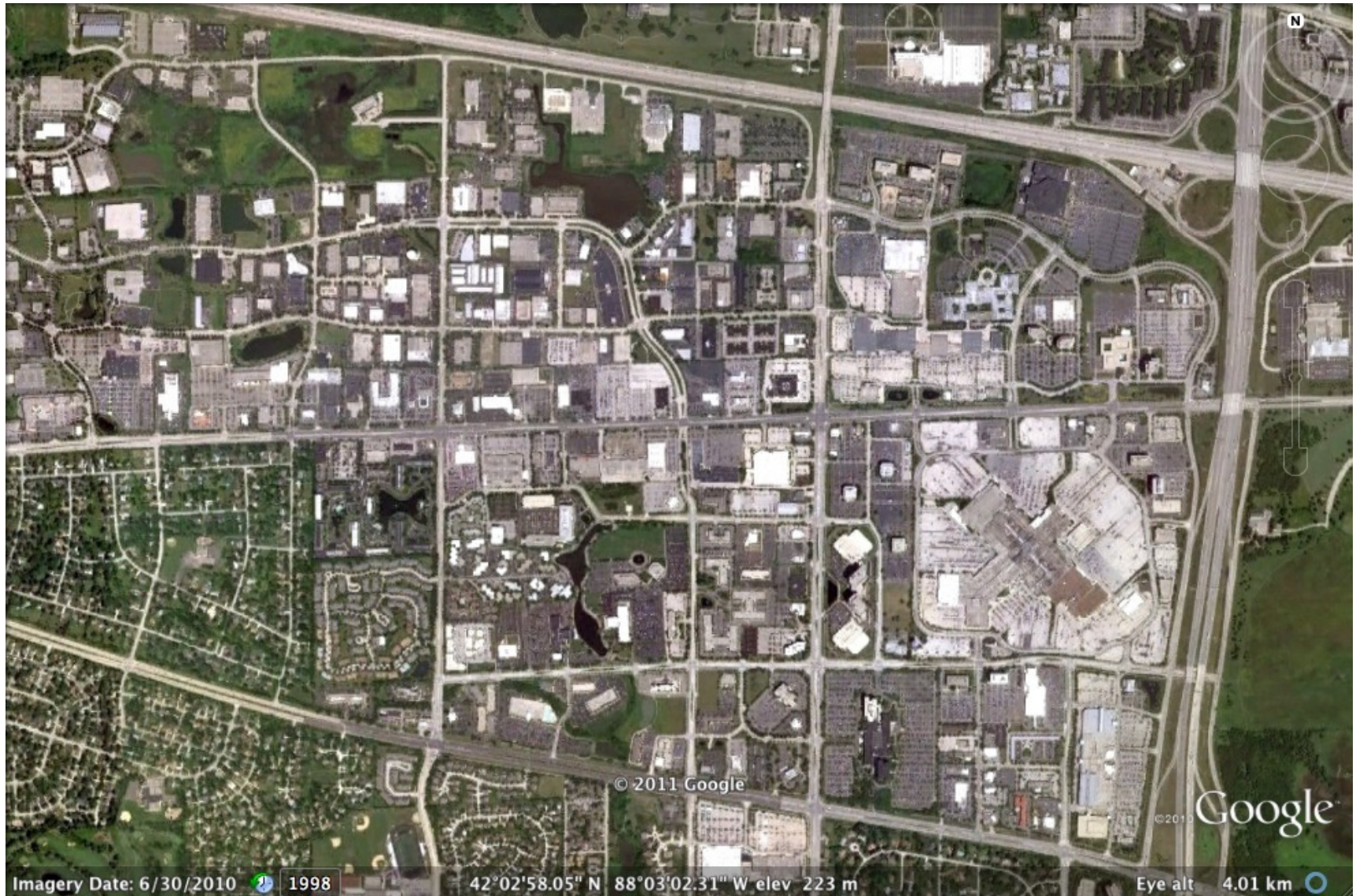
Covering roughly 150 square miles, the Salt Creek watershed incorporates more than 30 municipalities that are home to nearly 500,000 people.





ROOSEVELT UNIVERSITY
EVELYN T. STONE COLLEGE
OF PROFESSIONAL STUDIES

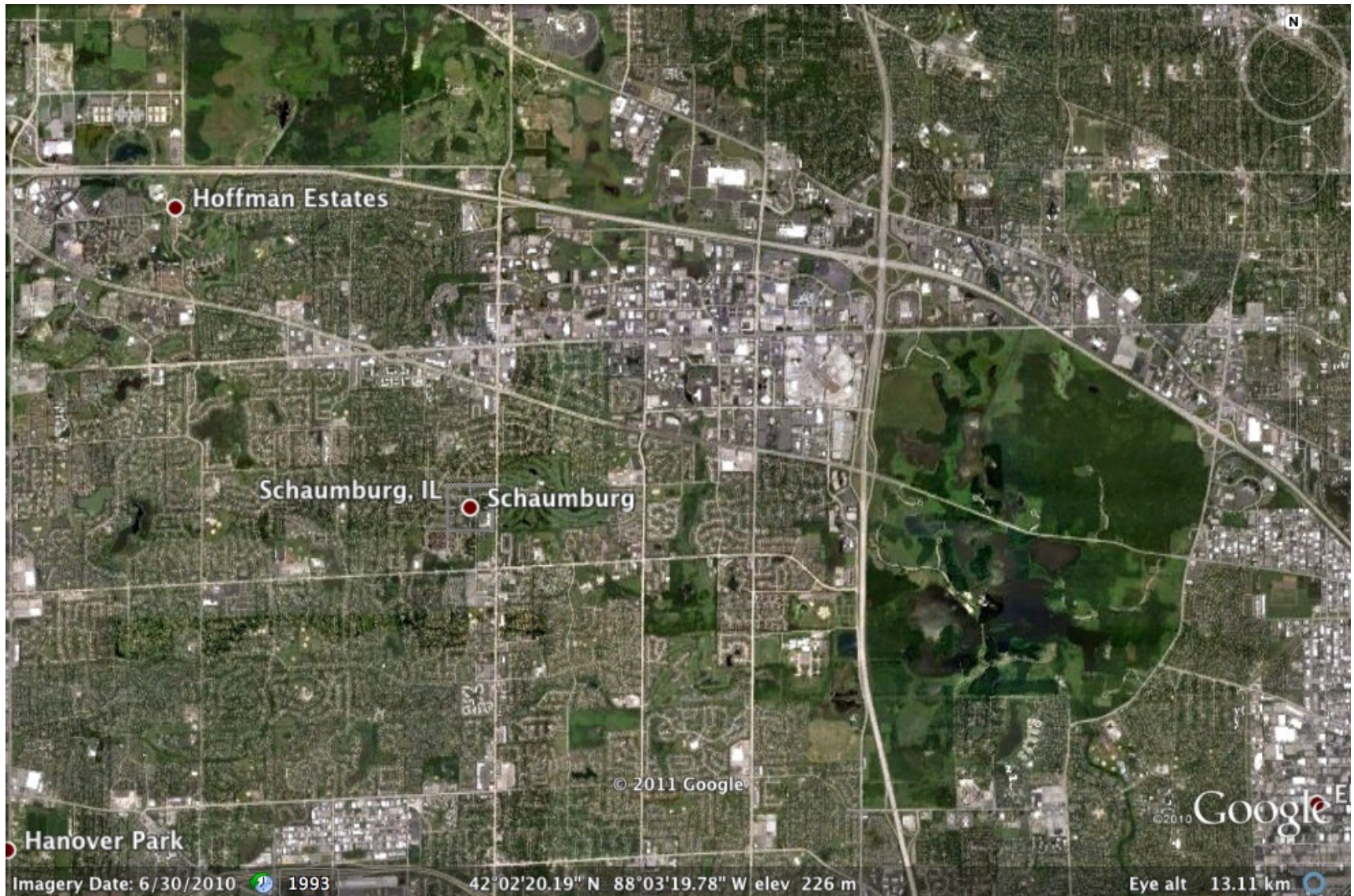
Suburban Hardscape





ROOSEVELT UNIVERSITY
EVELYN T. STONE COLLEGE
OF PROFESSIONAL STUDIES

Green Infrastructure





Wastewater Treatment



MWRDGC's **John Egan Wastewater Treatment Plant**, Schaumburg IL / Busse Woods

The Farm & the River





ROOSEVELT UNIVERSITY
EVELYN T. STONE COLLEGE
OF PROFESSIONAL STUDIES

Iron Street Farm





ROOSEVELT UNIVERSITY
EVELYN T. STONE COLLEGE
OF PROFESSIONAL STUDIES

Iron Street Farm





Photo by Ryan Hodgson-Rigsbee